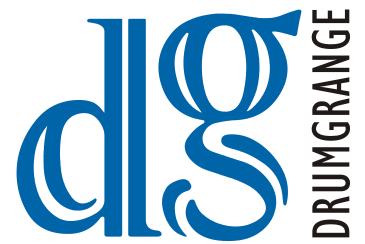


Mine Warfare Command Support System

Drumgrange's Mine Warfare Tactical Support System Replacement (MTSS(R)) provides Royal Navy Mine Warfare Forces with a comprehensive Mission Planning and Assessment capability.



PROVEN MINTACS SOLUTION

The system utilises the PC based MINTACS (Mine Warfare Tactical Command Software) developed by Sfs, Sydney which is in service with the Royal Australian Navy.

MINE WARFARE DATA EXCHANGE

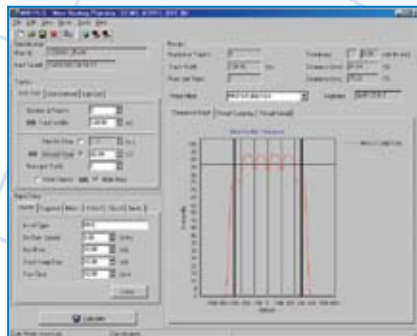
MTSS(R) includes tools for data exchange with:

- Mine Warfare Data Centres (including RN Route Survey Data Base)
- MCMV Command Systems (all NAUTIS variants)
- RN Command Support System (CSS)
- Message Handling Systems

MISSION PLANNING

MTSS(R) includes tools for mission planning to predict the clearance levels and time taken for a particular operation:

- Minehunting
- Minesweeping
- Clearance Diving



MINE COUNTERMEASURES FORCE ASSESSMENT

MTSS(R) calculates the combined clearance for a total MCM Force, and displays this on the tactical display.

THREAT ASSESSMENT

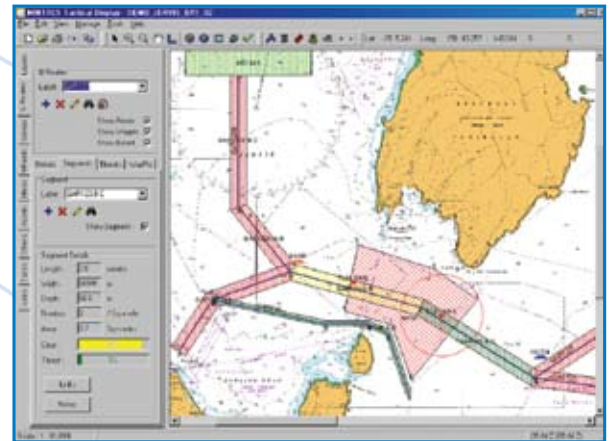
MTSS(R) calculates the remaining threat to ships after clearance has taken place.

FORCE SCHEDULE

MTSS(R) provides a view of tasks by date, asset and q-route segment.

MICROSOFT OFFICE TOOLS

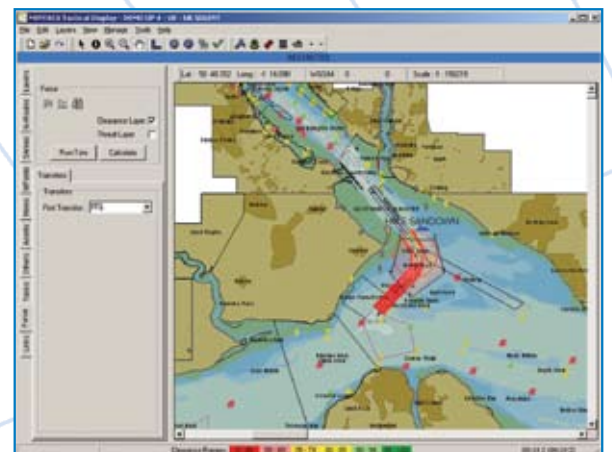
The data and plan displays can be embedded into standard MS Office applications (Word, Powerpoint etc).



TACTICAL DISPLAY

The Tactical Display presents the Mine Warfare situation to the Operator and Command.

Cleared channels, suspected minefields and detected mines can be plotted. As the mission progresses the clearance levels are displayed and colour coded. Raster and vector charts and maps are imported to provide background data. These are overlaid with detailed Additional Military Layers (AMLs), Mine Warfare, Environmental and Sidescan Sonar data as selectable layers.



SCALABLE CONFIGURATION

MTSS(R) is available as a standalone or as a network application suite. The standard suite comprises; a PC server with three PC workstations, a projector and printer. Each workstation has two TFT screens allowing the operator to input data on one screen while viewing tactical display on the second screen. Both Office PC and Ruggedised Deployable PC Hardware is available.

Mine Warfare Command Support System

MTSS(R)

- Mine Warfare Data Exchange
- Raster and Vector chart display
- Standard GIS pan, zoom, scroll etc
- Selectable display layers (including AMLs)
- Mine Warfare Tactical feature set
- Mine Warfare Environmental data
- Side Scan Sonar overlay
- Mission Planning and Assessment
- Display of individual MCMV and force clearance and threat levels
- Office and Ruggedised Deployable Hardware
- Additional Tools
 - Data Acquisition (including sonar imagery)
 - Detection Probability
 - Classification Probability
 - Position Accuracy (both static and dynamic)

“We design, develop and manufacture innovative products and are also experts at integrating existing technology to create successful, cost effective solutions.”



Registered Office: Chertsey, Surrey Registered in England No. 1460044
© Drumgrange Ltd 2007

Drumgrange Limited
Unit A, The Forum
Hanworth Lane
Chertsey
Surrey KT16 9JX
Tel: +44 (0) 1932 581100
Fax: +44 (0) 1932 569646
Email: info@drumgrange.co.uk
Internet: www.drumgrange.co.uk

Drumgrange Limited
3-7 South Way
Southwell Business Park
Southwell, Portland
Dorset DT5 2NJ
Tel: +44 (0) 1305 862100
Fax: +44 (0) 1305 862101
Email: info@drumgrange.com
Internet: www.drumgrange.co.uk



Approved to BS EN ISO 9001: 2000 and TickIT